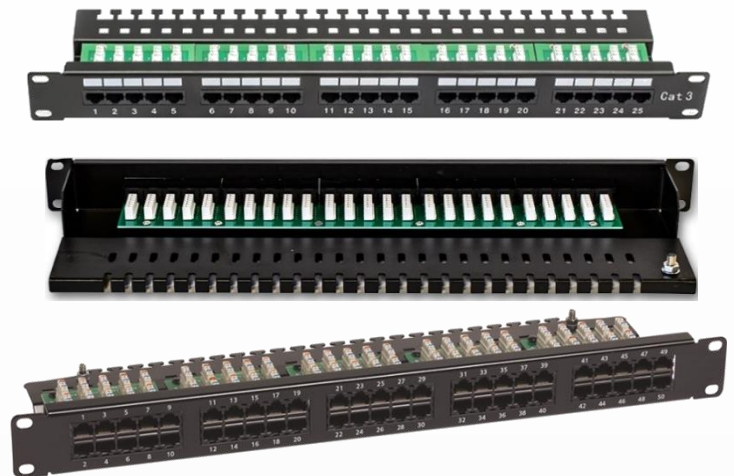


19" 1U 50 Port Voice Tray Patch Panel

P/N: PPXXC3R



Superiorortec high density Category 3 Patch Panel is designed for voice grade applications. This patch panel provides 25RJ45 & 50RJ45 Ports, Within 1 Rack Unit only, which offer an effective way to terminate a multi-pair cable and provide RJ45 ports interface. With the clear numbering scheme, it enables easy and quick identifications of the outlets.



MECHANICAL SPECIFICATIONS

Insertion Durability	750 Cycles Minimum
IDC Block Durability	200 Termination Cycles Minimum
Retention	30lbs minimum between the jacket and the plug

PHYSICAL SPECIFICATIONS

Jack Housing and IDC Block	Hi-Impact, Flame Retardant Plastic, UL94V-0
Spring Wire	Phosphor Bronze Alloy Plated with 3 micro-inch of gold over nickel
IDC Wire Range	Solid or Stranded, 22-26AWG
RJ45, 8-Position Connector	Meets FCC Part 68 and IEC 603-7

ENVIRONMENTAL SPECIFICATIONS

Storage Temperature	- 40° C ~ + 70° C
Operating Temperature	- 10° C ~ + 60° C
Relative Humidity (Operational)	Maximum Non-Condensing 93%

ORDERING INFORMATION

PP25C3R	Superiorortec 19" 1U 25 Port Voice Tray Patch Panel
PP50C3R	Superiorortec 19" 1U 50 Port Voice Tray Patch Panel