

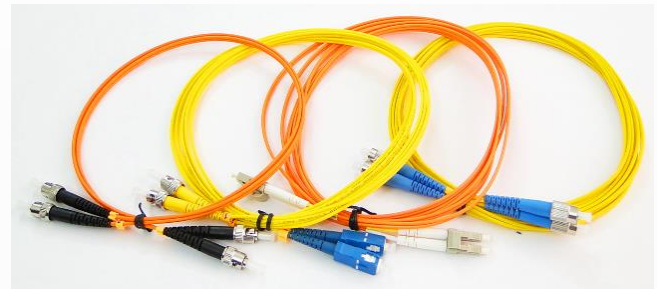
SuperiOtec high performance patch cords are a range of “best in class” patch cords employing highest grade components, manufacturing processes and test methods that offer excellent performance for demanding telecommunications and data center applications.

High Performance patch cords are used where low loss budget are essential and may be considered for splice replacement.



### Features:

- Cable color as international standard Yellow for Singlemode, Orange for Multimode (OM1 & OM2) and Aqua for Multimode (OM3 & OM4).
- Connector Available in (LC, SC, FC, ST & E2000) for both Singlemode & Multimode.
- Simplex & Duplex Connector.



### APPLICATION

Telecommunication	CATV
LAN & WAN	Data Center
Network	Broadband

### CABLE CHARACTERISTICS

Cable Material	Low Smoke Zero Halogen (LSZH)
Strength Member	Aramid
Jacket Diameter	0.9mm, 2.0mm & 3.0mm
Operating Temperature	-40 to 75°C
Storage Temperature	-40 to 85°C
Color	SM – Yellow MM – Orange (OM1 & OM2) MM – Aqua (OM3 & OM4)
Contact	PC, UPC & APC

❖ **Other Jacket colors are available upon request (Minimum Order 1000 Mtrs.)**

**PARAMETERS**

ITEM	MODE TYPE	PC	UPC	APC
Insertion Loss	Singlemode	≤0.30dB	≤0.30dB	≤0.30dB
	Multimode	≤0.30dB	≤0.30dB	≤0.30dB
Return Loss	Singlemode	≥45dB	≥50dB	≥60dB
	Multimode	≥35dB	≥35dB	≥35dB
Repetition Test		Additional Loss ≤0.1dB, Return Loss Variability <5dB		
Temperature Stability		Additional Loss ≤0.2dB, Return Loss Variability <5dB		

**ORDERING INFORMATION**

D XXX YY YY ZZ L	Superior tec Duplex Patch Cord, (XXX) Fiber Type, (YY) Connector Type [End-A], (YY) Connector Type [End-A], (ZZ) Length in Meters, (L) LSZH Low Smoke Zero Halogen
S XXX YY YY ZZ L	Superior tec Duplex Patch Cord, (XXX) Fiber Type, (YY) Connector Type [End-A], (YY) Connector Type [End-A], (ZZ) Length in Meters, (L) LSZH Low Smoke Zero Halogen

- XXX: Fiber Type (801: SM, 502: MM OM2 50/125µm, 503: MM OM3 50/125µm 504: MM OM4 50/125µm )
- YY: Connector Type [End-A]: SC, LC, ST, FC & MTRJ (PC, UPC & APC)
- YY: Connector Type [End-B]: SC, LC, ST, FC & MTRJ (PC, UPC & APC)
- ZZ: Length (in Meters)
- L: Low Smoke Zero Halogen (LSZH)
- Optional: (PC), (UPC) & (APC) Ultra/Angled Physical Contact